

A1502 — *Folding style*

BRIEF”

We use the new metal design, which is unique, avoid the high computation



CASHIER
ORDERING

CORE ADVANTAGES

A large red 'A+' symbol.

Grade A+Panel
No bad pixel



Resolution
1024*768



Stable
performance



Long
service life



Waterproof and
dustproof



Quiet heat
dissipation

Product Parameters

T a i x u n E l e c t r o n i c

Supply voltage	100V-240V
Host voltage	12V 5A
Display	15 inch resolution 1024* 768, 4:3TFT LED
Touch screen	10point Capacitive Touch
CPU	Intel Baytrail J1900 / J4125 / J6412 /I3 / I5(optional)
Memory	4GB / 8GB /16GB for optional
Hard disk	64G / 128G / 256G SSD / 500G HDD for optional
COM	2*RS232COM ports
USB	4-6 USB
Interface	RS-232*1 / USB2.0*3 / USB3.0*3 / HDMI*1 / VGA*1 RJ45*1 / Audio*1 / Dc in*1
Material quality	aluminium alloy case
Customer display	2x20 VFD(optional)
Customer screen	9.7"1024*768(optional)
MSR	3-Track MSR(optional)
Total body weight	11KG
Packaging volume	42*29.2*43CM

CAPACITIVE TOUCH”

10-finger capacitive touch



WATERPROOF™

Full lamination Customizable



BUILT-IN SPEAKER”

*Place an order for collection prompt
to avoid missing payment*



FOLDING BASE”

(reduce packaging volume, saving 30% shipping cost)



WIRE COVER”

Cable-hidden cover



Product Details

T a i x u n E l e c t r o n i c



(Total height of product: **360mm**)

**The size of the product is measured manually. There may be some deviation in the actual situation, subject to the actual object!*



(15" main screen **With logo**)



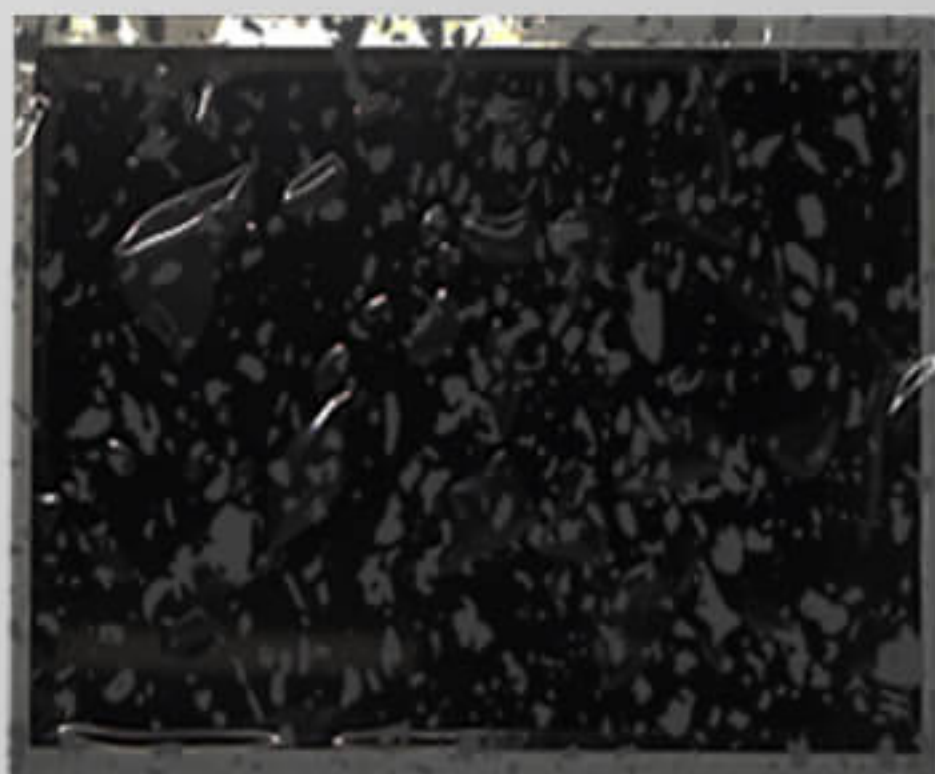
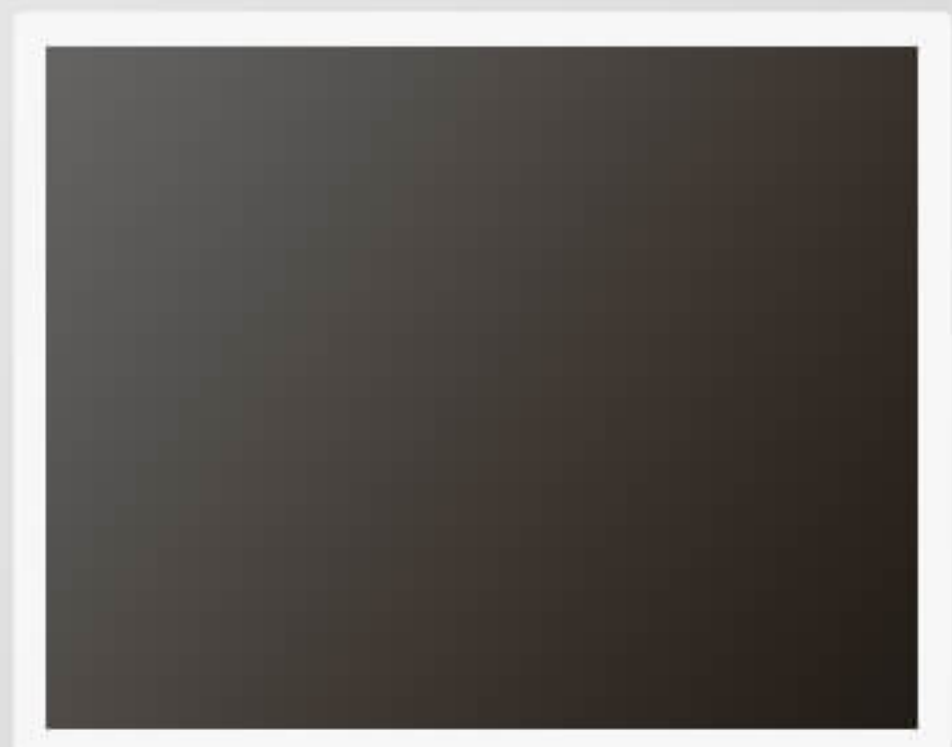
(**2*20VFD**)



(15" main screen)
(**9.7" Dual screen**)

CLEARER”

Resolution: 1280 * 1024, Scale: 4:3



TOKYO BOE SCREEN

MORE DELICATE AND CLEAR
SILKY TEXTURE
HD TOUCH SCREEN

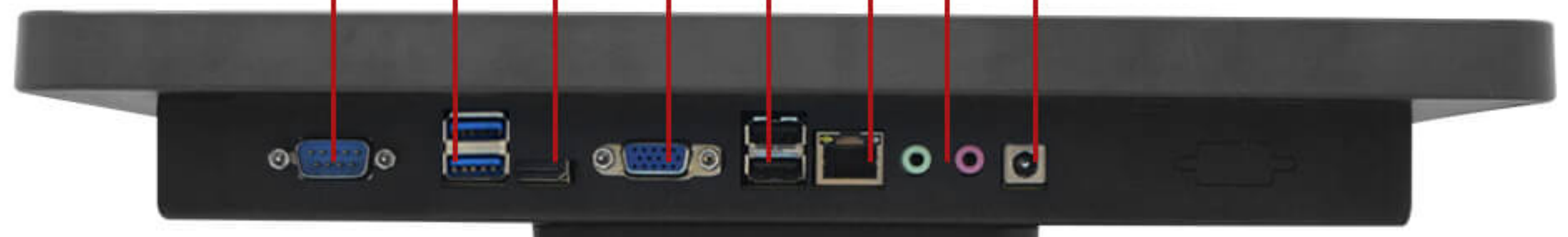
SCREEN OF A CERTAIN MANUFACTURER

INACCURATE COLOR
NOT DURABLE
EASILY TO GET DAMAGED



USB3.0 VGA RJ45 Dc in

COM1 HDMI USB2.0 Audio



NO-OFF

USB

