

TX-156SP

# Dual screen cash register

Capacitive touch screen with multi touch support

15.6 inches



**Note: This product package does not include a host and must have its own host.**

**The host must be equipped with: VGA+HDMI**

# Product Features

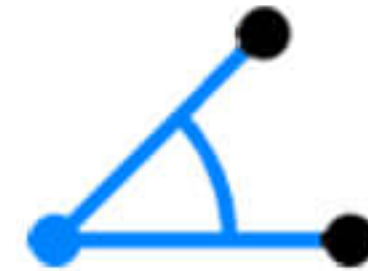
Powerful and comprehensive improvement



Ultra clear display



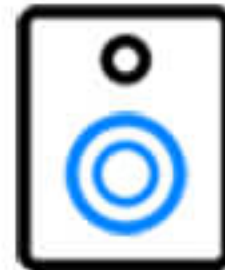
Sensitive touch



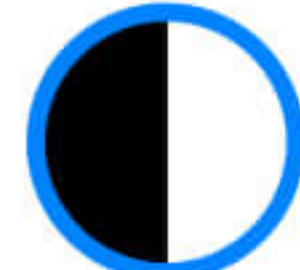
Adjustable perspective



Dual screen display



Integrated audio system  
Starting from 50 sets  
(to be customized)



Available in black and white



Rich interfaces



Easy installation



Metal support

# Product parameters

For more parameters, please consult customer service



Total height: **343mm**

Screen size: **15.6"** , Resolution: **1366\*768**

\*The product size is measured manually, and there may be some slight deviations in practice.  
Please refer to the actual product!

Model: **TX-156SP**

Color: **Black, white**

Screen: **15.6寸**

Resolution: **1366\*768**

Contrast: **1000:1**

Base material: **Hardware**

Touch life: **≥50 million times** Touch force: **10G-200G**

Screen spacing: **0.264MM**

Response time: **3MS**

Display Shell Material: **ABS**

Volume weight: **About 9kg**

Working temperature: **-10 °+60 °**

Touch type: **Capacitive touch (10 point touch)**

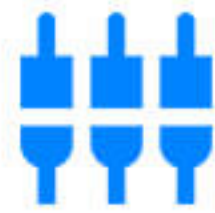
Interface: **VGA, HDMI, DC in, USB**

# Base hidden line awesome

Say goodbye to clutter and enhance visual aesthetics



Farewell to chaos



Neat and clean



Space saving



Dual screen cable storage with 4 outlets, fast and convenient

# New **BOE LCD** screen

Optimize the LCD screen to restore the original color of the image



Clearness



Narrow bezel



Smooth use



# Adjustable pitch and tilt

## Ease of mind and effort

Meeting the visual perspective of multiple audiences



Flexible and adaptable



Can stand and sit



Dual screen display



Dual screen adjustable

# Capacitive touch screen supports 10 fingers

---

Capacitive touch technology, fast  
response in milliseconds



Accurate touch control



Ten Finger Touch



Touchable with wet hands



# HD Ultra High Definition Touch Screen

Comfortable screen without flashing



Ultra clear image quality



Sensitive touch



Efficient cashier





# Detail display

Good appearance quality and balance of use



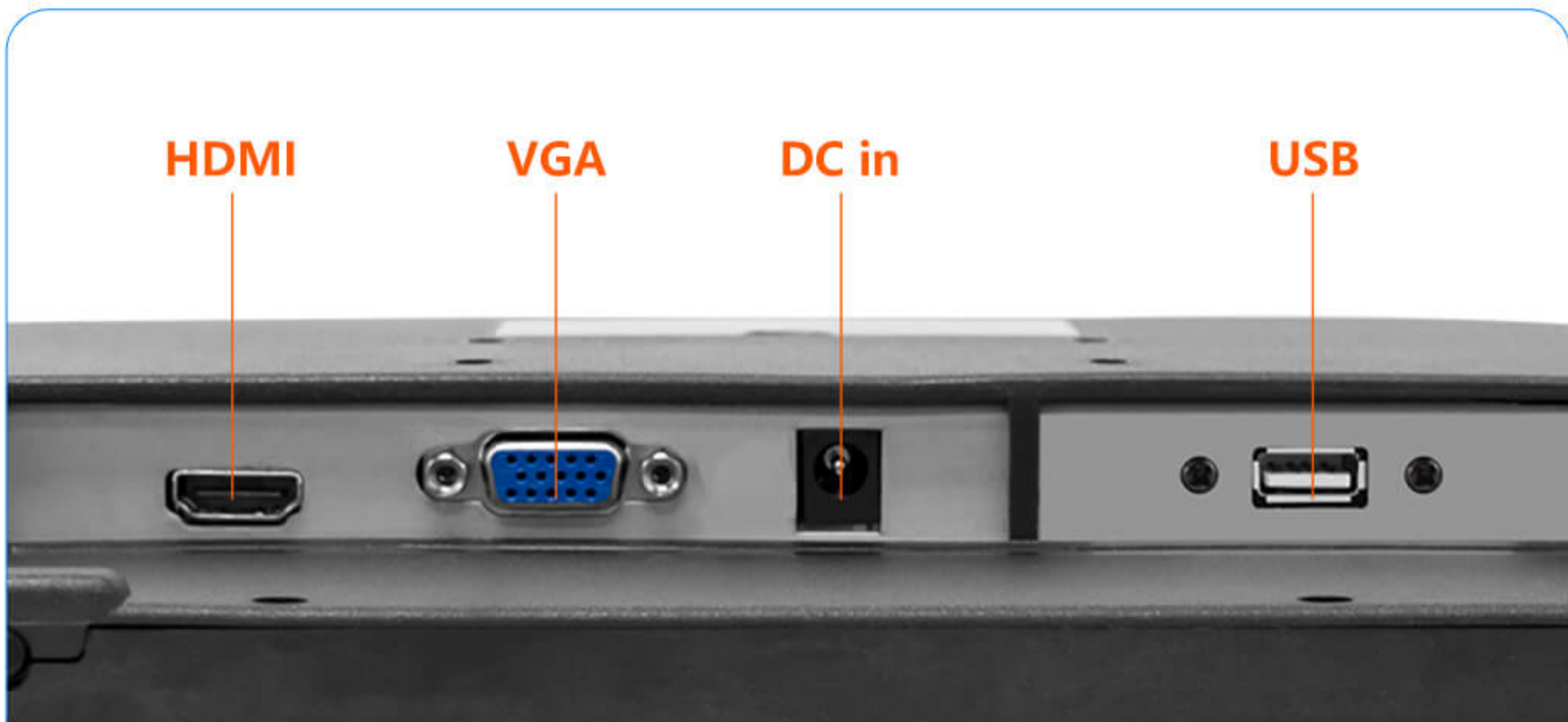
01

Screen brightness adjustable



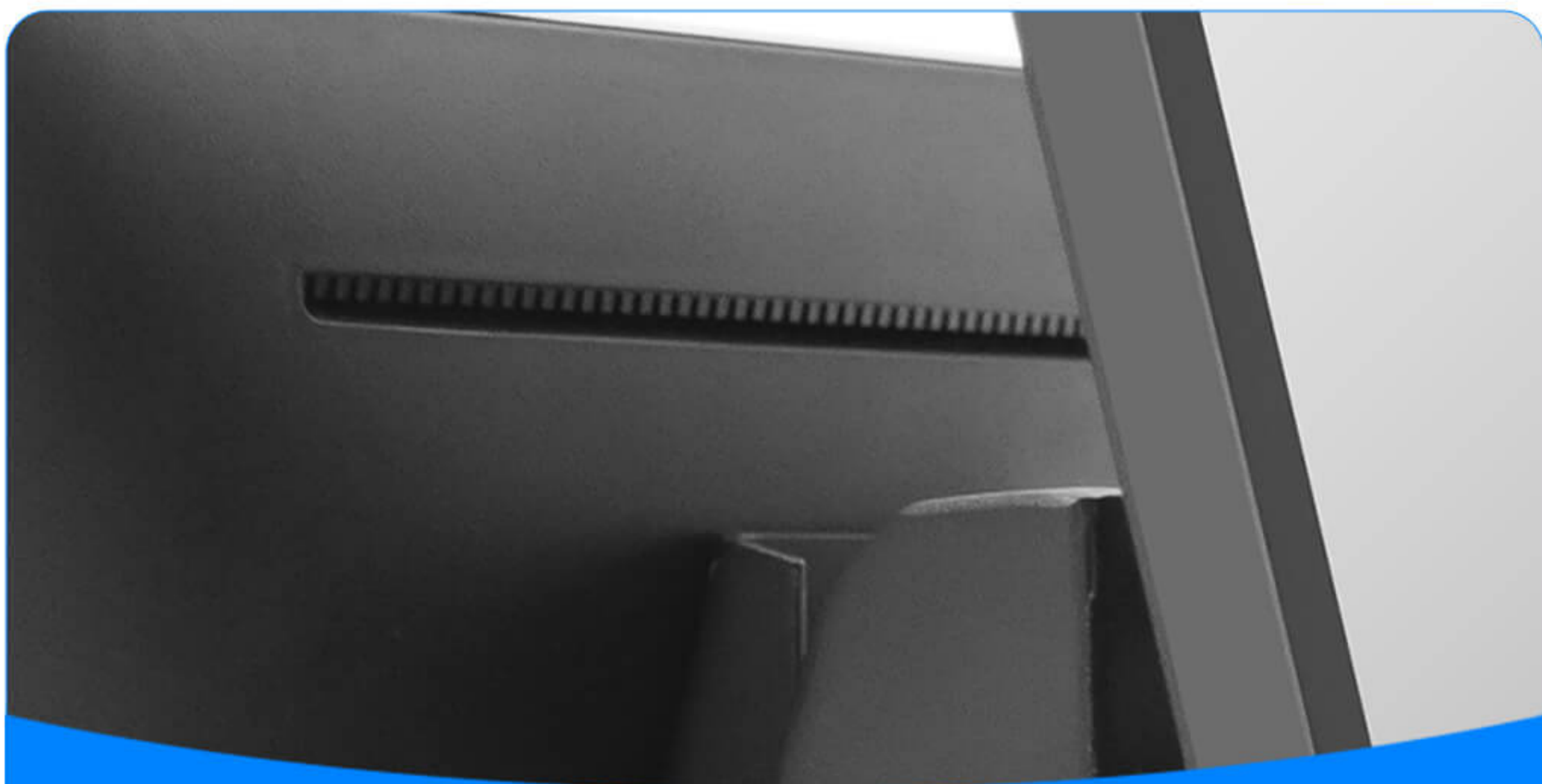
02

Built-in audio (customized) starting from 50 sets



**03**

Neat interface



**04**

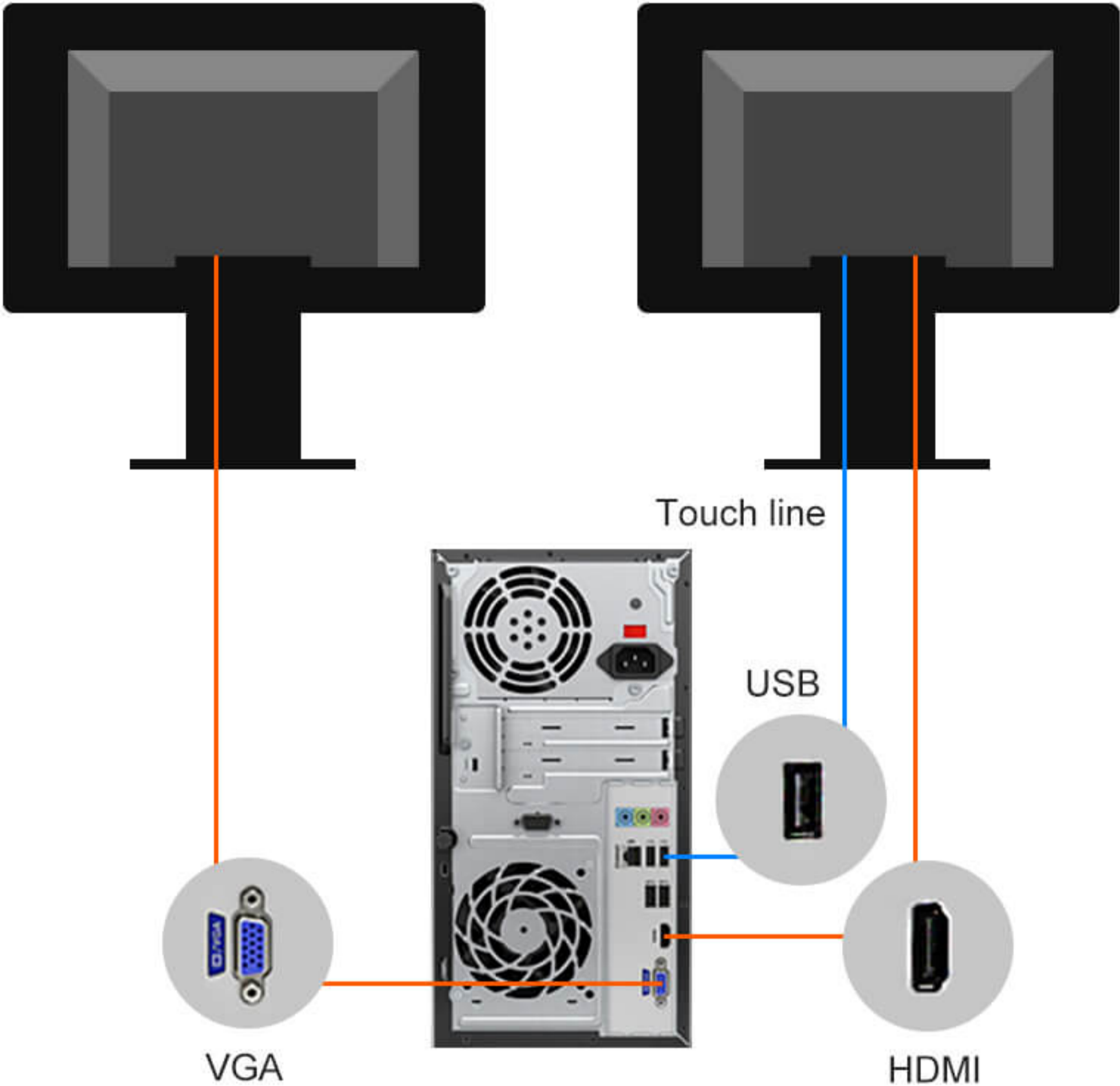
Heat dissipation hole

# Interface Connection Diagram

The customer's host must be equipped with a VGA+HDMI interface

Without touch interface

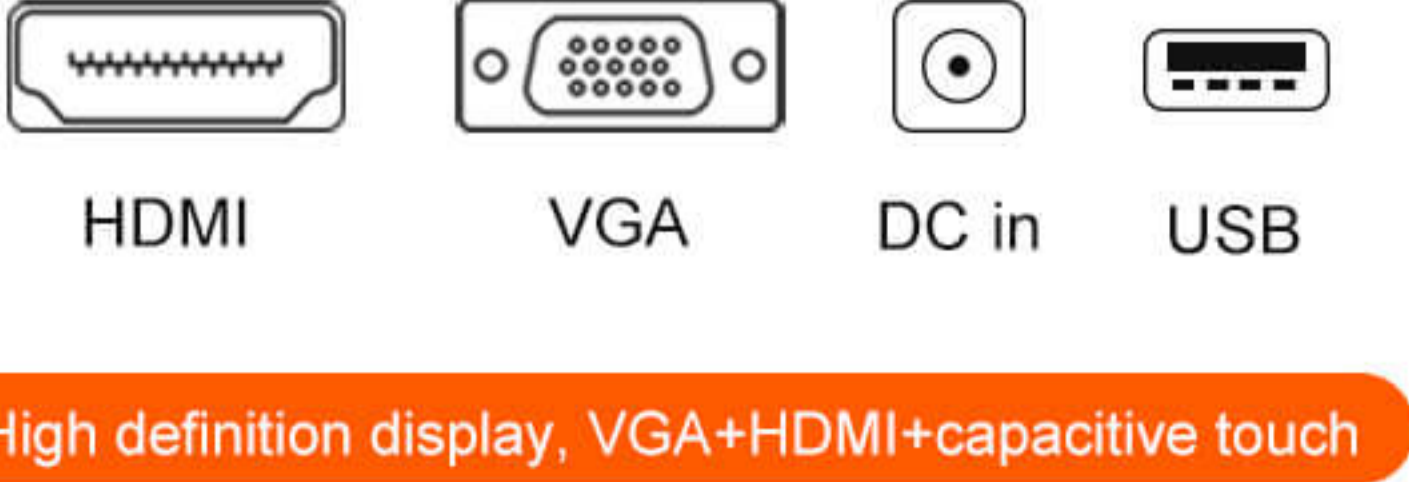
With touch interface



**No touch screen interface**



**Touch screen interface**



# Real time display

Real time product photos give you an intuitive experience



